



# WORKWEAR

BY **Lemon & Soda**

**Uni**  
**Everywear**  
**Contrast**  
**Private Label**



# Signs & Symbols



## Regular fit

These styles follow your body in a flattering way, without clinging to it. The sleeves and shoulders fit closer to the body. The regular fit is currently the most popular shape.



## Longer length

In addition to the different sizes, these T-shirts are longer than standard size, which ensures a pleasant wearing comfort.



In transition. A tear-away brand label or no brand label in the neck. This makes personalization very easy.



A tear-away brand label or no brand label in the neck. This makes personalization very easy.



# Content & Concepts

Uni.....	4
Everywear.....	12
Contrast.....	28
Private Label.....	38



Uni

Basic & Comfortable







# Uni

## Basic & Comfortable

Lemon & Soda Uni collection; T-shirt, poloshirt, sweater and polosweater. Basic workwear with a regular fit and a very high quality. A perfect base for company clothing and workwear, easy to print.

Available in sizes S through 6XL.

Available in 4 basic colours



White



Dark  
Navy



Dark  
Grey



Black





## Uni T-shirt

**LEM4501**  
S - 6XL

- > Unisex Style
- > Wide Size Range

100% combed cotton  
Single jersey  
180 gr/m<sup>2</sup> (white 170)



WHITE



DARK NAVY



DARK GREY



BLACK





## Uni Polo

**LEM4601**

S - 6XL

35% combed cotton -  
65% polyester  
Double Lacoste piqué  
240 gr/m<sup>2</sup> (white 230)

- > Unisex Style
- > Wide Size Range



WHITE



DARK NAVY



DARK GREY



BLACK



## Uni Polosweater

**LEM4701**  
S - 6XL

> Unisex Style  
> Wide Size Range

65% cotton - 35% polyester  
Sweat  
280 gr/m<sup>2</sup> (white 270)



WHITE



DARK NAVY



DARK GREY



BLACK



## Uni Sweater

**LEM4751**

S - 6XL

65% cotton - 35% polyester

Sweat

280 gr/m<sup>2</sup> (white 270)

> Unisex Style

> Wide Size Range



WHITE



DARK NAVY



DARK GREY



BLACK

# Everywear

Premium quality - Breathable - Cooldry







# Everywear

Premium quality - Breathable - Cooldry

Workwear is Everywear! The new Cooldry line from Lemon & Soda is a perfect basis for workwear. Comfortable antibacterial T-shirts, poloshirts, sweaters and jackets with a regular fit for all professions, from carpenter to sports instructor and from dentist to waitress.



Available in 5 basic colours





## Everywear Cooldry T-shirt

**LEM4502**  
S - 3XL

> Ladies Style  
> Unique Quality

50% cotton (inside) -  
50% polyester (outside)  
Piqué  
170 gr/m<sup>2</sup> (white 165)



WHITE



ROYAL BLUE



MIDNIGHT BLUE



DARK GREY



BLACK





# Everywear Cooldry T-shirt

**LEM4504**  
S - 6XL

> Unisex Style  
> Wide Size Range

50% cotton (inside) -  
50% polyester (outside)  
Piqué  
170 gr/m<sup>2</sup> (white 165)



WHITE



ROYAL BLUE



MIDNIGHT BLUE



DARK GREY



BLACK



## Everywear Cooldry Polo

**LEM4,602**  
S - 3XL

> Ladies Style  
> Unique Quality

50% cotton (inside) -  
50% polyester (outside)  
Piqué  
170 gr/m<sup>2</sup> (white 165)



WHITE



ROYAL BLUE



MIDNIGHT BLUE



DARK GREY



BLACK



# Everywear Cooldry Polo

**LEM4604**  
S - 6XL

- > Unisex Style
- > Unique Quality

50% cotton (inside) -  
50% polyester (outside)  
Piqué  
170 gr/m<sup>2</sup> (white 165)



WHITE



ROYAL BLUE



MIDNIGHT BLUE



DARK GREY



BLACK

ready to ship

NEW



## Everywear Cooldry Crewneck Sweater

**LEM4732**  
XS - 6XL

- > Unisex Style
- > Anti-bacterial
- > Unique Quality

48% cotton (outside) -  
47% polyester (inside) -  
5% elastane  
Sweat  
300 gr/m<sup>2</sup>



WHITE



ROYAL BLUE



MIDNIGHT BLUE



DARK GREY



BLACK



## Everywear Cooldry Hooded Sweater

**LEM4772**

XS-6XL

48% cotton (outside) -  
47% polyester (inside) -  
5% elastane  
Sweat  
300 gr/m<sup>2</sup>

- > Unisex Style
- > Anti-bacterial
- > Pockets with SBS waterproof zippers



WHITE



ROYAL BLUE



MIDNIGHT BLUE



DARK GREY



BLACK

ready to brand

NEW



## Everywear Cooldry Sweat Cardigan

**LEM4762**  
XS- 6XL

48% cotton (outside) -  
47% polyester (inside) -  
5% elastane --- Sweat  
300 gr/m<sup>2</sup>

- > Unisex Style
- > Anti-bacterial
- > SBS waterproof zippers



WHITE



ROYAL BLUE



MIDNIGHT BLUE



DARK GREY



BLACK



## Everywear Winter Softshell Jacket

**LEM4855**

XS - 6XL

96% polyester - 4% spandex

--- Softshell

100% polyester --- lining

100% polyester --- padding

320 gr/m<sup>2</sup>

- > Unisex Style
- > SBS Zipper
- > Pockets with SBS waterproof zippers
- > Detachable hood



More information page 27



ready to wear

NEW



MIDNIGHT BLUE



DARK GREY



BLACK

ready to hand



## Everywear Softshell Hooded Jacket

**LEM4827**  
S - 3XL

96% polyester - 4% spandex  
Softshell  
320 gr/m<sup>2</sup>

- > Ladies Style
- > Detachable Hood
- > Waterproof zippers



More information page 27



MIDNIGHT BLUE



DARK GREY



BLACK





# Everywear Softshell Hooded Jacket

**LEM4829**

S - 6XL

96% polyester - 4% spandex

Softshell

320 gr/m<sup>2</sup>

- > Unisex Style
- > Detachable Hood
- > Waterproof zippers



More information page 27



MIDNIGHT BLUE



DARK GREY



BLACK





# Always on the move with softshell

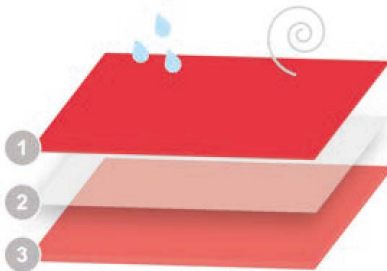
In wintertime or when working outside water resistant clothing is a must. The best protection against nature's way? Softshell! Softshell clothing offers warmth, comfort and is water repellent. It breathes and is flexible, making this type of material very suitable for outdoor activities, such as exercise and work.

There is a type of softshell for every occasion. To make the right choice, keep in mind the Thermoplastic Polyurethane (TPU), water resistance and breathing properties. It will help the wearer to stay warm and dry during activities.

## 3 LAYER SOFTSHELL BOPDED - 4 WAY STRETCH

Water repellent

Water resistance



1. **Outside**  
Polyester - spandex --- poplin
2. **TPU breathable membrane**
  - Windproof
  - Waterproof (8.000 mm)
  - Breathable (5.000 gr/m<sup>2</sup>/24h)
3. **Inside**  
100% polyester --- microfleece (anti-pilling)







# Contrast

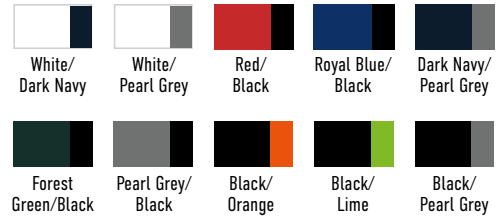
6 styles - 8 sizes - 10 colour combinations



# Contrast

**6 styles - 8 sizes - 10 colour combinations**

Lemon & Soda Workwear with contrast colours at the neckline and on the sides of the garment. The contrast collection is easy to provide with a company logo. A pleasant wearing comfort with a great regular fit.





## Contrast T-shirt

**LEM4500**  
S - 6XL

> Unisex Style  
> Premium Quality

100% combed cotton  
Single jersey  
180 gr/m<sup>2</sup> (white 170)

4 STYLES  
8 SIZES  
10 COLOURS

UP TO  
6XL



WHITE/  
DARK NAVY



WHITE/  
PEARL GREY



RED/  
BLACK



ROYAL BLUE/  
BLACK



DARK NAVY/  
PEARL GREY



FOREST GREEN/  
BLACK



PEARL GREY/  
BLACK



BLACK/  
ORANGE



BLACK/  
LIME



BLACK/  
PEARL GREY





## Contrast Polo

**LEM4600**

S - 6XL

- > Unisex Style
- > Premium Quality

35% combed cotton -  
65% polyester  
Double Lacoste piqué  
240 gr/m<sup>2</sup> (white 230)



WHITE/  
DARK NAVY



WHITE/  
PEARL GREY



RED/  
BLACK



ROYAL BLUE/  
BLACK



DARK NAVY/  
PEARL GREY



FOREST GREEN/  
BLACK



PEARL GREY/  
BLACK



BLACK/  
ORANGE



BLACK/  
LIME



BLACK/  
PEARL GREY



## Contrast Polosweater

**LEM4700**  
S - 6XL

> Unisex Style

65% cotton - 35% polyester  
Sweat  
280 gr/m<sup>2</sup> (white 270)

4 STYLES  
8 SIZES  
10 COLOURS

UP TO  
6XL



WHITE/  
DARK NAVY



WHITE/  
PEARL GREY



RED/  
BLACK



ROYAL BLUE/  
BLACK



DARK NAVY/  
PEARL GREY



FOREST GREEN/  
BLACK



PEARL GREY/  
BLACK



BLACK/  
ORANGE



BLACK/  
LIME



BLACK/  
PEARL GREY



## Contrast Sweater

**LEM4750**

S - 6XL

> Unisex Style

65% cotton - 35% polyester

Sweat

280 gr/m<sup>2</sup> (white 270)

6 STYLES  
8 SIZES  
10 COLOURS

UP TO  
6XL



WHITE/  
DARK NAVY



WHITE/  
PEARL GREY



RED/  
BLACK



ROYAL BLUE/  
BLACK



DARK NAVY/  
PEARL GREY



FOREST GREEN/  
BLACK



PEARL GREY/  
BLACK



BLACK/  
ORANGE



BLACK/  
LIME



BLACK/  
PEARL GREY



## Contrast Cardigan

**LEM4725**

- > Unisex Style
- > Zipper in Pockets

S - 6XL

65% cotton - 35% polyester

Sweat

280 gr/m<sup>2</sup> (white 270)

4 STYLES  
8 SIZES  
10 COLOURS

UP TO  
6XL



WHITE/  
DARK NAVY



WHITE/  
PEARL GREY



RED/  
BLACK



ROYAL BLUE/  
BLACK



DARK NAVY/  
PEARL GREY



FOREST GREEN/  
BLACK



PEARL GREY/  
BLACK



BLACK/  
ORANGE



BLACK/  
LIME



BLACK/  
PEARL GREY



# Contrast Softshell Jacket

**LEM4800**

S - 6XL

- > Unisex Style
- > Zipper in Pockets

96% polyester - 4% spandex

Softshell

320 gr/m<sup>2</sup>

6 STYLES  
6 SIZES  
10 COLOURS

UP TO  
6XL



WHITE/  
DARK NAVY



WHITE/  
PEARL GREY



RED/  
BLACK



ROYAL BLUE/  
BLACK



DARK NAVY/  
PEARL GREY



FOREST GREEN/  
BLACK



PEARL GREY/  
BLACK



BLACK/  
ORANGE



BLACK/  
LIME



BLACK/  
PEARL GREY



# your story your style your Private Label

Private Label by Lemon & Soda is a unique clothing concept to strengthen your corporate identity or image of your company. We will work with you to translate your corporate identity and appearance into a suitable clothing line. We think along with you throughout the entire process, from concept to delivery, and provide advice where necessary. This way the end product fits seamlessly with your wishes.

*why?  
the result is original  
and authentic*

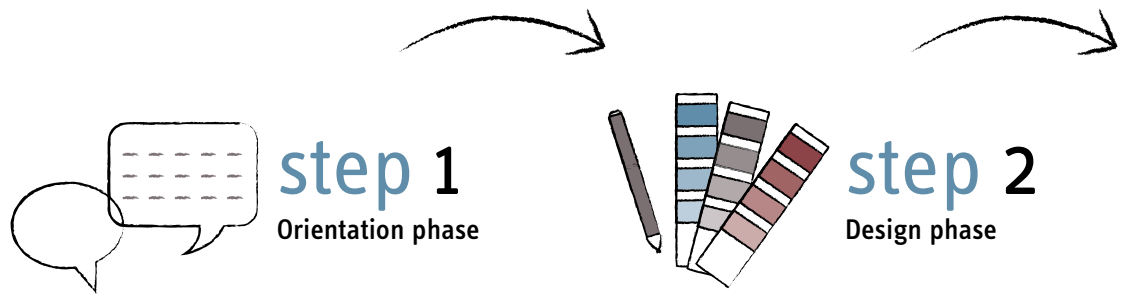
A strong and recognizable image is of great importance for your brand or company. We design and produce clothing that is completely tailored to your wishes and requirements. Whether you are looking for corporate, promotional or merchandise clothing, Private Label by Lemon & Soda has it all!

Through years of experience in the clothing industry, we ensure that the process is simple and efficient for you. We are ready to guide you every step of the way. From designing the clothing, selecting the right quality fabrics and colors, to refining your logo and other artwork. We ensure that the items perfectly match your brand identity.

With Private Label you are assured of high-quality clothing. These clothes are made from durable materials that are comfortable to wear and last a long time. In addition, we have strict quality controls to ensure that only the best garments leave the factories.

Flexibility is paramount. Whether it concerns small quantities or larger production runs, we can meet all your wishes. We also offer the option of hang tags with your own logo and custom packaging. This so that your clothing line exudes even more exclusivity.

Curious about what we can do for your brand? Contact us and make a lasting impression with Private Label by Lemon & Soda!



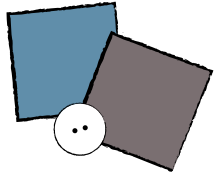
# *your* **PRIVATE LABEL** in **5** steps

*Private label is of added value when you.*

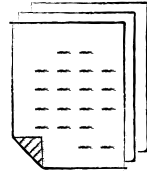
- Have your own vision on promotional and corporate clothing
- Want to customize an existing item
- Wants to put your own twist on an article
- Want to integrate your company's corporate identity more fully
- Wants to radiate exactly what your company stands for



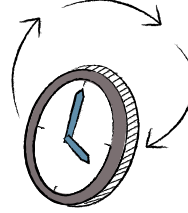




step 3  
Material selection



step 4  
Quotation and  
order confirmation



step 5  
Production process





Private Label by Lemon & Soda  
Workwear T-shirt





### Private Label by Lemon & Soda Workwear T-shirt

- NON 4500
- 🏠 S | M | L | XL | 2XL | 3XL
- 🧵 100% combed cotton --- single jersey
- 🏠 180 gr/m<sup>2</sup>
- ➡ - contrast necktape
- contrast cut & sewn parts with a reflective piping
- reflective details

#### COLOURS

- Dark Grey -  
PMS number cool gray 11c
- Royal Blue -  
PMS number 2738c
- Red -  
PMS number 032c
- Black -  
standard colour
- White -  
standard colour

- 1.** Private woven neck label & size label



Size: width 8 cm x height 1,5 cm

- 2.** Embossed logo at the front



Size: 25 cm

- 3.** Metal button at the right sleeve



Size: 12 mm

- 4.** Woven taglabels at the right hem



Size: 4 x 1 cm (folded: 8 x 1 cm)

- 5.** Silicone badge in 1 colour at the back neck



Size: 4 cm



**Private Label by Lemon & Soda**  
**Workwear Hooded Sweater**





### Private Label by Lemon & Soda Workwear Hooded Sweater

- NON 4772
- 👕 S | M | L | XL | 2XL | 3XL
- 🧶 48% cotton - 47% polyester - 5% elastan --- sweat
- 👤 300 gr/m2
- ➡ - contrast necktape
- contrast cut & sewn parts
- reflective details
- all-over printed inside hood
- contrast SBS waterproof zippers
- quick-dry
- anti-bacterial
- heavy ribs at the hem and cuffs

#### COLOURS

- Blue -  
PMS number 2738c
- Green -  
PMS number 347c
- Black -  
standard colour
- White -  
standard colour

1. Private woven neck label & size label



Size: width 8 cm x height 11 cm

2. Printed logo at the front in 1 colour (+tub)



Size: 20 cm

3. Embroidered logo at the back in 2 colours



Size: 25 cm

4. Woven sidelabel at the left sideseam in 2 colours



Size: 1 cm x 4 cm  
(folded: 3 cm x 4 cm)







**WORKWEAR**  
BY **Lemon&Soda**

[www.lemon-soda.eu](http://www.lemon-soda.eu)